

CONTENTS

- BV- Ultrasonic Vascular Doppler Detector
- BV- Peripheral Vascular Disease Detector
- The diabetes foot eximination
- BFW- Infusion&Blood Warmer
- BF- Ultrasonic Fetal Doppler
- BFM- Fetal Maternal Monitor
- BFM- Obstetric Central Monitoring System
- BVF- Vein Finder
- BD- Syringe Destroyer
- BIC- Insulin Cooler Box
- BFP- Feeding Pump
- BSNF- Obstetric Detector
- BSNT- Vital Signs Detector
- Breast Self Check Mammography Apparatus
- Ultrasonic Cosmetic Instrument



BESTMAN , founded in 2001, famous brand of fetal monitor in China , global leadership brand of Vascular doppler, is an high-tech medical equipment company in research , production and sales.With strong scientific reaserch strength, Bestman holds an R&D team mainly composed of domestic famous researchers , returnees , masters and doctors.

After many years of efforts, the "Ultrasonic Doppler Blood Flow Detector" has been developed. At present, there are main products: Ultrasonic Vascular Doppler, Ultrasonic Fetal Doppler, Infusion & Blood warmer, Fetal Maternal Monitor, Syringe Destroyer and ECG machine.The company has passed the ISO9001:2015 international quality management system certification, ISO13485:2016 medical device international quality management system certification.Products passed the European Union CE certification and the United States FDA certification.Products have been exported to Europe, America,Africa, the Middle East,Southeast Asia and other 98 countries and regions.Bestman is always in line with the management aim that "innovate in science and technology, create wealth, repay society and contribute to human health" and strives to build China's top medical equipment base as a leader in the industry.



Established in 1998

1998-2003

Established Beiciman
Renaming Bestman
Passing the ISO9001 quality system certification
Acquiring qualification certificate for import and export
Awarded the title of "excellent private enterprise for reemployment in Shenzhen"
Won the "Besserman assured brand" issued by the people's daily market information center

2004-2005

Won the title of "Besserman assured brand"
Awarded the honor certificate of "honesty, quality"
Passing ISO13485 international medical device
EU system certification
Product obtains CE certificate

2006-2007

Awarded the "fetal heart sound instrument product quality, reputation double guarantee demonstration unit" certificate
Company trademark registration
The company is recognized as the general taxpayer of value-added tax
Awarded the title of "glorious star" issued by Shenzhen Association of private enterprises

2010-2011

Get "import and export integrity AAA enterprise" certificate
BF products get FDA certification
Get the certificate of national high-technology enterprise

2012-2019

Company's trademark registered successfully in Indonesia
Obtaining certification of software enterprise
Signing and developing cooperation with biomedical engineering center of Shenzhen University
The company has become a joint training base for Postgraduates in South China Normal University

Product development process

In 1998, starting to research the first handheld BF-500 series products
In 2002, researching the first desktop BF-600 series products
In 2003, researching the first BD-300A/B/C series products
In 2004, researching the second handheld BF-500A/B/C series products
In 2006, researching the first professional Maternal/Fetal Monitor
In 2007, researching the first desktop ultrasonic vascular doppler detector with printer
In 2008, researching professional Fetal/Maternal CPU Monitor System
In 2009, researching the first professional Infusion&Blood Warmer
In 2010, starting to customized OEM fetal doppler for customers
In 2011, researching the first professional ultrasonic vascular doppler with atlas analysis
In 2013, researching the first Insulin Cooler Box for diabetic
In 2013, researching the first three in one special antenatal detector for obstetrics
In 2013, researching the first three in one vital signs monitor

In 2014, the first APP Bluetooth fetal heart sound instrument listed
In 2014, researching the first professional dental-use automatic destroyer
In 2014, researching the first peristaltic feeding pump
In 2015, researching the first warmer with bubble removal function
In 2015, researching the first two cabinet thermostat equipment
In 2015, researching using accessories of special auxiliary heater equipment : liquid stop
In 2015, researching the first handheld vascular doppler with printer
In 2015, researching the first handcart type desktop version of professional ultrasonic vascular doppler detector
In 2016, researching the first handheld vascular doppler with flat probe
In 2016, researching the first small family ultrasonic beauty instrument
In 2016, researching the first vein visualization instrument 1998

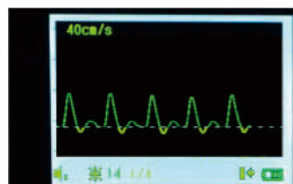


BV-520T
Ultrasonic Vascular Doppler Detector

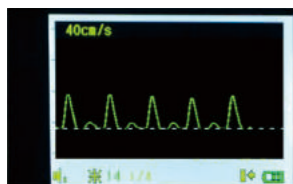
Application

Ultrasonic Vascular Doppler Detector is mainly used to detect the blood flow status of human or animal artery. It is suitable for Urology, male, hand surgery, Department of orthopedics, trauma surgery, vascular surgery, burns, plastic surgery, cardiothoracic surgery and so on with ultra high sensitivity, small size and easy-to-use characteristics.

Features



Bidirectional blood flow display page



Unidirectional blood flow display page

- 10.0MHz \pm 20% blood flow probe was used to detect the blood flow of human arterial venous blood;
- 2.4 inches TFT display can display the blood flow waveform, the average blood flow velocity;
- Built-in data interface, the host can also be used alone, can also be connected to the use of computers;
- Matching optional Doppler ultrasound blood vessel analysis and diagnosis software;
- Bidirectional blood flow and unidirectional blood flow curve are optional; bidirectional display speed curve can be set into two modes;
- Built-in high quality loudspeaker with clear and loud output Unidirectional probe is normative collocation, bidirectional probe is optional.



BV-520+
Ultrasonic Vascular Doppler Detector

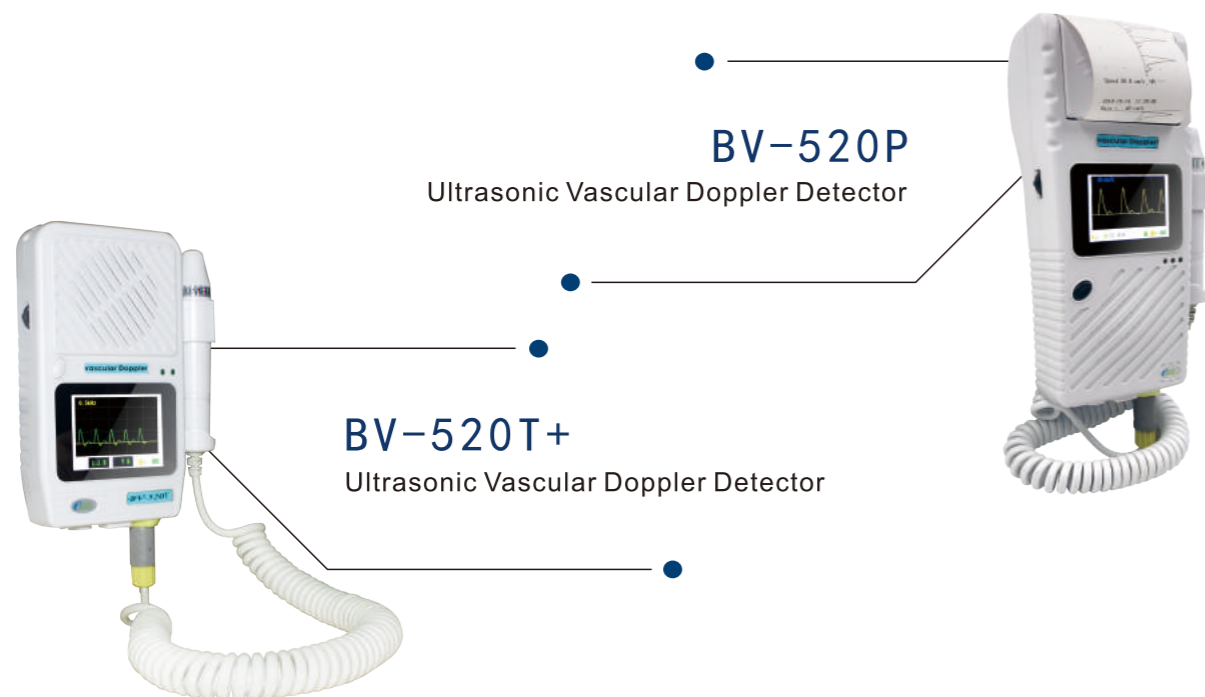
Application

Ultrasonic vascular doppler is mainly used to detect the human and animal blood flow.

Features



- Detection of arterial / venous blood flow in human or animal by 9.0MHz blood flow probe;
- Strip LED cursor indicating blood flow intensity;
- Built-in high quality loudspeaker, the output blood flow sound is clear and sonorous;
- Built-in high capacity rechargeable battery meets the demand of long time work
- Portable equipment, small size, easy to use;
- Normative collocation: 9.0MHz Blood Detector Probe.



BV-520P

Ultrasonic Vascular Doppler Detector

BV-520T+

Ultrasonic Vascular Doppler Detector

Application

Ultrasonic Vascular Doppler Detector is mainly used to detect the blood flow status of human or animal artery. It is suitable for Urology, male, hand surgery, Department of orthopedics, trauma surgery, vascular surgery, burns, plastic surgery, cardiothoracic surgery and so on with ultra high sensitivity, small size and easy-to-use characteristics.

Features



- 10.0MHz + 20% bidirectional blood flow probe can detect arterial blood flow simultaneously;
- 2.4 inches TFT display can display the blood flow waveform, average blood flow velocity and pulse rate value;
- Host has the function of built-in storage, can store a large number of blood flow waveform, can print out at any time;
- Can set the direction of the probe, mode frequency, voice, time scale, waveform, data etc;
- Built in data interface, the host can also be used alone, can also be connected to the use of computers;
- Ultrasonic Doppler bidirectional blood vessel analysis and diagnosis software is optional
- Bidirectional blood flow and unidirectional blood flow curve are optional; bidirectional display speed curve can be set into two modes
- The display / separation mode and the combined flow velocity pattern are easy for doctors to use;
- BV-520P has built-in thermal printer, can print the blood flow waveform synchronously, and also can be transferred out of memory
- Printing preserved blood flow waveform;
- BV-520P printing design is similar to POS machine, the operation is convenient;



BV-620V/620VP

Ultrasonic Vascular Doppler Detector

Application

The ultrasonic Doppler blood flow detector is mainly used to detect the blood flow status of human or animal artery. It is suitable for Urology, male, hand surgery, Department of orthopedics, trauma surgery, vascular surgery, burns, plastic surgery, cardiothoracic surgery, etc. with ultra high sensitivity, small size, easy to use.

Features



- Detection of arterial / venous blood flow by 10.0MHz + 20% blood flow probe;
- The mean velocity of blood flow was measured for the effect of finger / toe and limb vascular anastomosis, and the pulse rate was also detected;
- 3.2 inch color LCD display real-time instantaneous velocity, envelope pattern and pulse rate value of blood flow;
- Built in high quality loudspeaker, the output blood flow sounds clear and sonorous;
- Built in high capacity rechargeable battery meets longtime work;
- Can be equipped with special software, realize analysis and data transmission to the computer with print
- Single / bidirectional blood flow probes are available to meet different demands;
- BV-620VP built-in thermal printer can print and monitor blood flow curve and pulse rate synchronously.



BV-650

Ultrasound Vascular Doppler

Application

It is mainly used for rapid and accurate diagnosis and diagnosis of non interventional peripheral vascular disease (PAD) in human body. By measuring the doppler ultrasound technique for ABI and TBI parameters to improve the doctor's detection rate of the diagnosis of peripheral vascular disease, it can quantitatively determine the detection rate of the diagnosis of peripheral vascular disease, and can quantitatively determine the severe degree of patients' peripheral vascular disease;It is suitable for geriatric department, cardiovascular department, Department of Endocrinology, physical examination department and other departments.

Features



- Easy to use operation interface (switchable in Chinese and English), easy touch-screen operation;
- Diagnosis of disease can be made only by measuring bloodpressure at wrist / ankle;
- The ABI and TBI results can be calculated automatically;
It is compatible with bidirectional, unidirectional blood flow probe and PPG probe, which is convenient for doctors to measure different parts;
- With USB interface, optional PC software, through the USB interface to connect to the PC for data management and analysis of a large number of patients;
- The built-in thermal printer can print the data immediately after measurement
- Configure 5.6 inch TFT LCD display, all data results are displayed directly on the LCD;
- Portable cart is available for bedside operation;

The definition of ABI and TBI:

ABI (Ankle brachial index) =Systolic arterial pressure of ankle/Brachial artery systolic pressure

TBI (Toe arm index) =Toe arterial systolic pressure/Brachial artery systolic pressure



Vascular Doppler System

BV-660T/660T+

Peripheral Vascular Disease Detector

Application

It is mainly used for rapid and accurate diagnosis and diagnosis of non interventional peripheral vascular disease (PAD) in human body. By measuring the doppler ultrasound technique for ABI and TBI parameters to improve the doctor's detection rate of the diagnosis of peripheral vascular disease, it can quantitatively determine the detection rate of the diagnosis of peripheral vascular disease, and can quantitatively determine the severe degree of patients' peripheral vascular disease;It is suitable for geriatric department, cardiovascular department, Department of Endocrinology, physical examination department and other departments.

Features



Working Interface

- Three kinds of blood pressure waveform measurement mode, easy for doctors to choose to use;
- It's only necessary to measure blood pressure at the wrist / ankle to diagnose the disease;
- Can automatically calculate ABI and TBI, and calculate the results;
- It is compatible with bidirectional, unidirectional blood flow probe and PPG probe, which is convenient for doctors to measure different parts;
- 1 million groups of data can be stored, and the data can be backed up to the hospital database at any time;
- Configuration of laser printer is convenient for recording and analyzing test data;
- Mobile cart design, equipped with super large LCD display;
- BV-660T+ can measure the maximum systolic pressure of upper limb and lower limb simultaneously and calculate ABI or TBI automatically, which is easy to operate and shortens the test time;Portable cart is available for bedside operation;

Peripheral arterial disease is a common disease that develops into typical intermittent claudication or rest pain symptoms in the later stages. Further development can cause lower limb ulcers, infections, necrosis, and even amputation;The most simple and effective method for diagnosing peripheral arterial disease is the ankle brachial ratio (ABI) examination.ABI is the ratio between the systolic pressure of the ankle artery and the systolic blood pressure of the upper arm. It is a convenient and non-invasive method of examination;Many international and domestic experts and academic toes have called for active ABI periodic examinations to cope with the high-risk population of PAD, so as to make early diagnosis and early treatment of PAD.



The diabetes foot examination

Application

Bestman Screening and diagnosis box for diabetic foot is a fast and non-invasive screening plan for diabetic peripheral vascular lesions Which could check Check the physiological status of peripheral blood vessels with 8MHz bidirectional probe examination and ankle/ brachial and toe Brachial sphygmomanometer components (measurement ankle /brachial index ABI toe /Brachial index TBI).We can effectively prevent diabetic foot caused by diabetic complications, and further develop into gangrene and reduce the risk of amputation greatly through early screening.

Features

- TFT-LCD display shows instantaneous average blood flow velocity, pulse rate, and bidirectional waveform;
- Can store 50 sets of data for examination of finger, toe and limb blood vessels;
- Diagnosis of multiple sensory peripheral neuropathy with the 10g nylon yarn tactile examination and local acupuncture pain detection;
- 128Hz tuning fork for deep sensory examination is the gold standard for neuropathy;
- Function
 - 1、 Exam peripheral vascular lesions of diabetes
 - 2、 Exam diabetic PNP
 - 3、 Diagnosis of diabetic foot
- Standard of Examination

Ankle blood pressure <50mmhg=Critical limb ischemia

Ankle blood pressure>brachial artery 130%= arteriosteogenesis

Toe blood pressure<30mmHg=Critical limb ischemia



BFW-1000
Infusion & Blood Warmer



BFW-1000+
Infusion & Blood Warmer

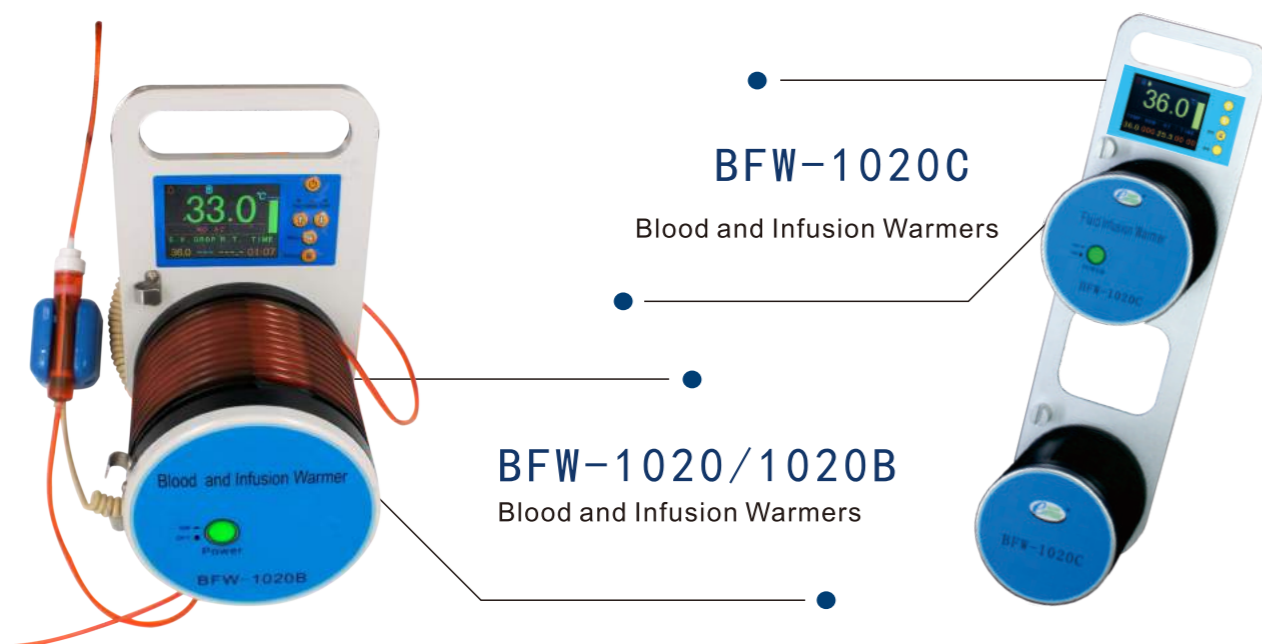
Application

The medical transfusion and infusion heater is an instrument for heating the liquid of the human body by heating the infusion tube. The heating device has high heating efficiency and convenient use; Dry trough heating structure, the use of conventional infusion tube, no special supplies.It is suitable for transfusion and transfusion before operation, during and after operation; transfusion of intravenous nutrition fluid; infusion of children or newborn; transfusion and transfusion under cold environment.

Features



- Temperature control technology: using intelligent microcomputer control technology, with three protection, liquid automatic heating and a high precision control in the temperature range has been set; fault alarm, power supply in the built-in rechargeable battery, the external power supply power after the infrared detection function can work continuously for 3-6 hours; dry heating structure, 2 minutes heated to the set temperature;
- Prompt function: after the infusion is finished, the sound and light alarm can be used to remind the doctor to change the liquid medicine or to pull out the needle; and the three power off protection when over temperature.
- Waterproof design: This machine can prevent liquid drop or splash, it is very safe;
- Setting range: 28°C -41 °C ±0.5°C
- Heating capacity: 0-1000ml/ hours
- BFW-1000: use high brightness LED digital tube to clearly display liquid heating temperature;
- BFW-1000+: 2.4 inch color LCD display set temperature and actual temperature, dropping speed and working time etc.;
- BFW-1000+: unique drop speed / room temperature / wireless function design, through the wireless function can transfer data to the central monitoring system.

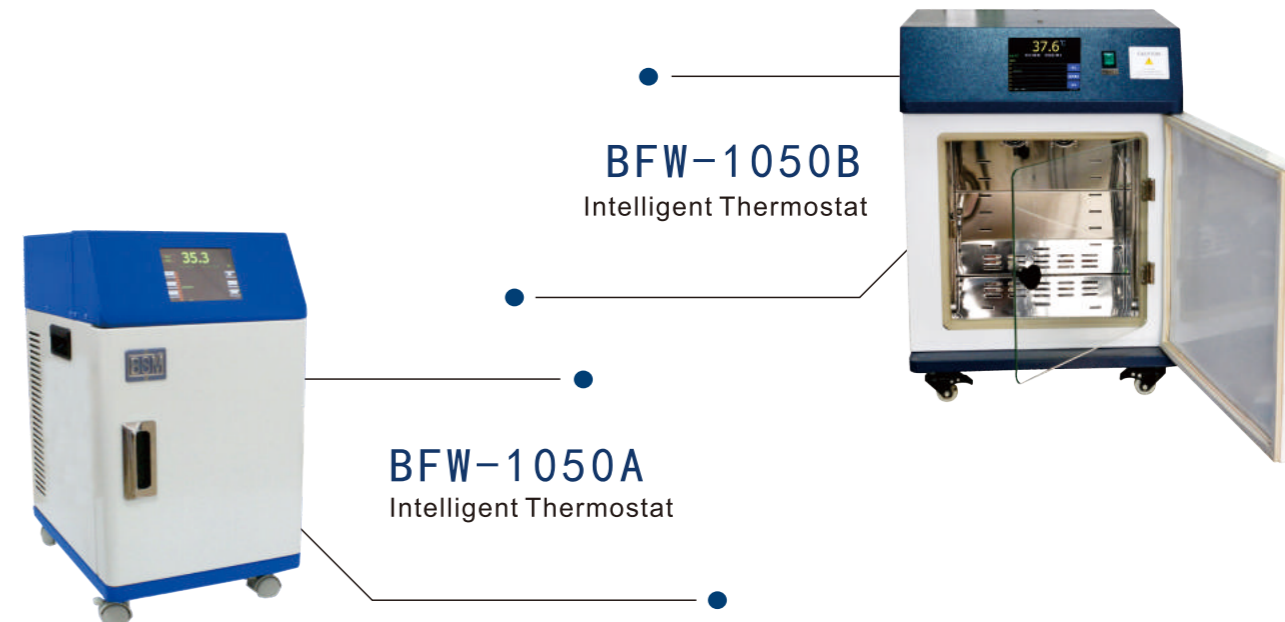


Application

Infusion & Blood Warmer is suitable for operation room, ICU, emergency room, ward or other places; When the instrument works, the heat passes through the heat exchanger to the flowing liquid in the groove, and the blood, blood products, liquid medicine, nutrient solution or flushing liquid are heated to ideal temperature under the condition of cold storage or room temperature, which can prevent the low temperature syndrome and the related complications

Features

- High efficiency: adapt to the change of liquid velocity, temperature and environment, intelligent microcomputer can control the temperature automatically, the heating capacity can reach 9 liters / hour, and it can heat multi-channel isothermal liquid at the same time. (BFW-1020C heating capacity is 15 liters / hour) unique drop speed / room temperature / wireless connection function design, through wireless function can transfer data to the central monitoring system (BFW-1020B configuration);
- Flexible: suitable for large flow infusion and transfusion, can also be used for general transfusion, heating temperature range is set at 28-41 degrees Celsius; (0.1 increments)
- Clear: use 3.2 inch color LCD display, synchronous display: real time temperature, setting temperature, heating time, alarm indicator, room temperature, drop speed, whether there is no city power instructions, whether there is liquid indication, whether there is communication instructions;
- Fast: 2 minutes to set the temperature, 24 hours of continuous work;
- Economy: disposable pipeline low price; (large flow blood transfusion using special tube)
- Innovation: no electricity alarm after power cut;



Application

Products applicable to the industry: The health care industry, drug control, environmental protection, chemical industry, laboratory, food, health and epidemic prevention departments for drugs, reagents, vaccines and other products stored in imported computer monitoring, temperature controller, color display, high precision, high and low temperature alarm, temperature sensor fault alarm, to prevent accidents.

Features

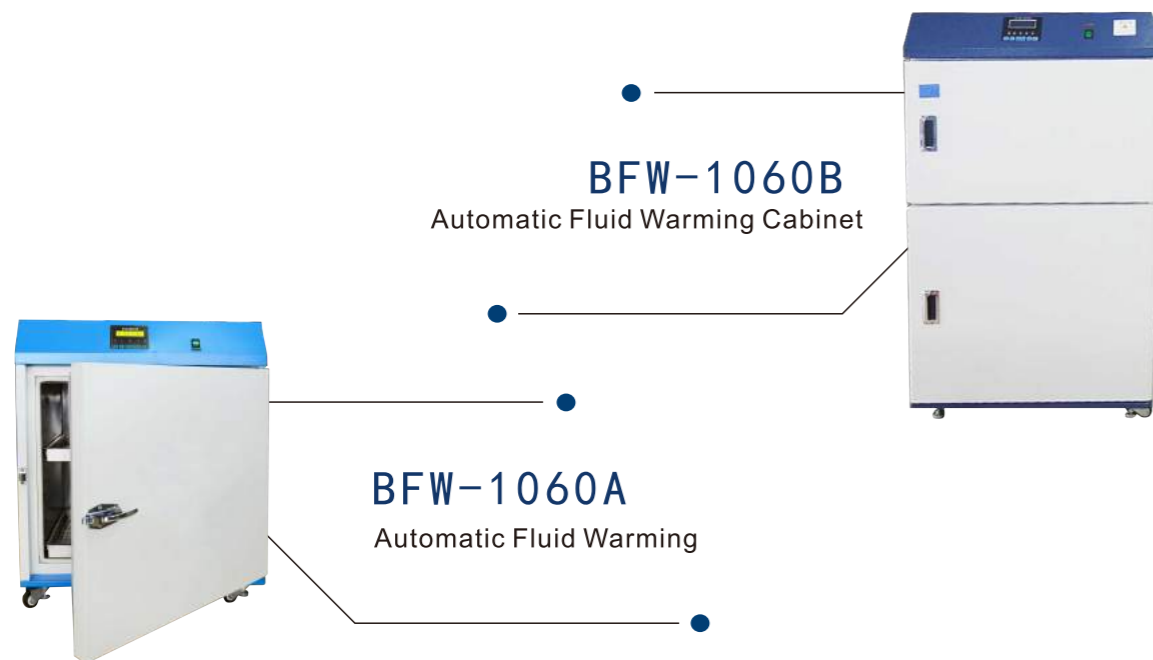


Working Interface



Set Interface

- 32 bit high speed microprocessor, the temperature control accuracy can reach $\pm 0.5^{\circ}\text{C}$, controllable temperature value is between 5°C and 60°C ;
- True color touch screen, large screen display, with the screen synchronous display of data transmission, timer and temperature change;
- According to the heating step, the temperature is monitored in real time, and 16 monitors are synchronized and monitored in real time;
- User-friendly user panel, easy to identify, easy to operate;
- Built in toughened glass door provides good air tightness and easy to observe the working condition of the machine;
- Provide a variety of modes of work, adapt to a variety of environments;
- Three temperature protection, temperature cut-off function, leakage and current excessive circuit breaker;
- The silent heating motor makes the temperature distribution of the inner cavity of the instrument uniform, and the rocking function is built-in to improve the heating efficiency;
- BFW-1050A capacity: 10 liters, maximum heating power: 300W
- BFW-1050B capacity: 30 liters, maximum heating power: 500W
- BFW-1050C capacity: 50 liters, maximum heating power: 700W



BFW-1060B
Automatic Fluid Warming Cabinet

BFW-1060A
Automatic Fluid Warming

Application

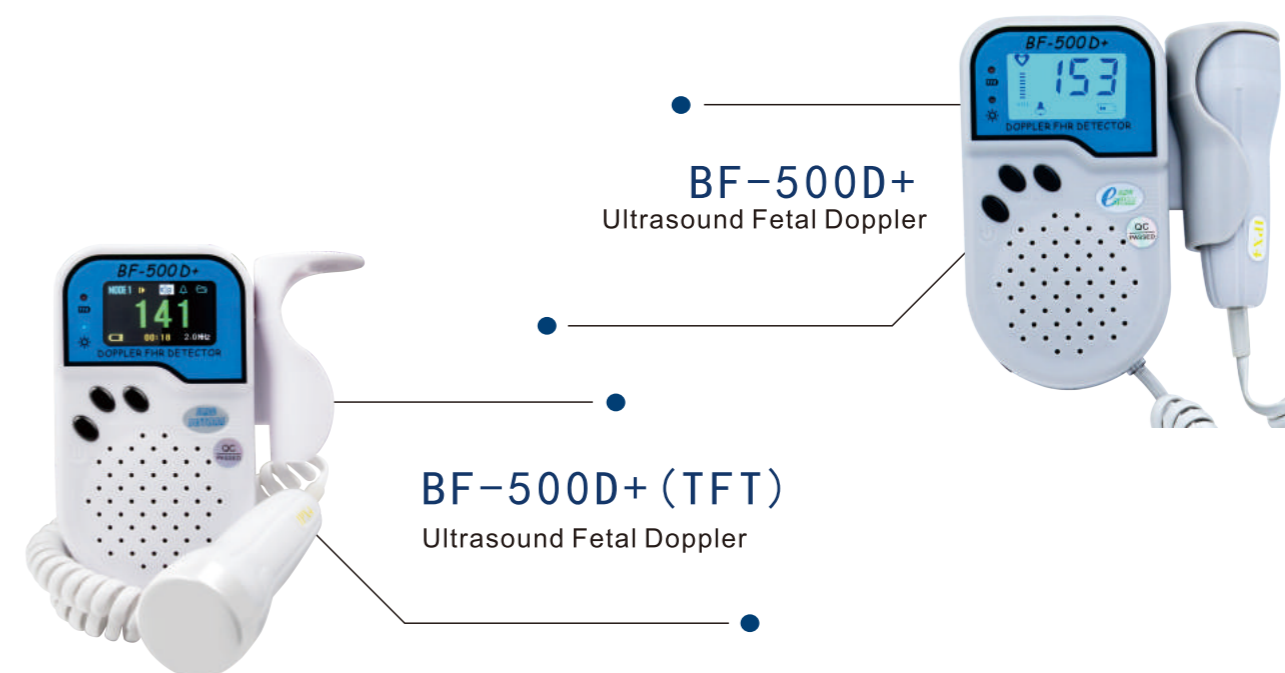
Products used in operating room, ICU ward, CT catheter room, Radiology, interventional room, emergency department and other hospital departments; Used for heating liquid pharmaceuticals, physiological brine, contrast agents, rinses, iodine, dialysate, patient warming cabinet, etc which needs thermostatic heating.

Features



Working Interface

- Microcomputer control, accurate and reliable, friendly interface;
- Automatic alarm device, safe and reliable;
- Built-in double liner design, select nutrient solution or injection mode according to different requirements ;
- Nutrient solution or other reagents heating mode temperature range: 30-70 °C ;
- Injection mode temperature range: 37-40 °C ;
- Large liner capacity design, the liner can be placed in the fluid and solid; drawer design, using rail transportation conveniently;
- BFW-1060 is 154L; BFW-1060B is 252L;



BF-500D+
Ultrasound Fetal Doppler

BF-500D+ (TFT)
Ultrasound Fetal Doppler

Application

BF series ultrasound fetal doppler mainly applies to detect fetal heart rate in hospital, clinic and at home etc.

Features



Curve display interface



Automatic alarm interface



Toggle multiple languages conveniently,
English, Chinese already supported.

- Portable design, the probe holder with a card-type protection seat design, easy loading and unloading, with a gallus, easy to carry;
- Probe with highly efficient interference design, stable performance,
- 2.0MHz ultrasound probe; LCD displays FHR accurately, Syncheart rate flicker signal, battery symbol, volume and fetal heartrate abnormal sound and light alarm, etc ;
- Shut down automatically in one minute without input and have fetal heart rate over range alarm and battery power alarm;
- BF-500D + with backlight for night use, the backlight can be set by the user to save energy, extend battery life;
- BF-500D + TFT can set the interface, count mode(four mode)alarm on/off & fetal heart rate range alarm settings, language switching, etc .;
- Built-in speaker, with a headphone jack, can transmit audio signals;
- Multiple frequency probes for optional to meet different needs.



BF-560
Ultrasound Fetal Doppler

Application

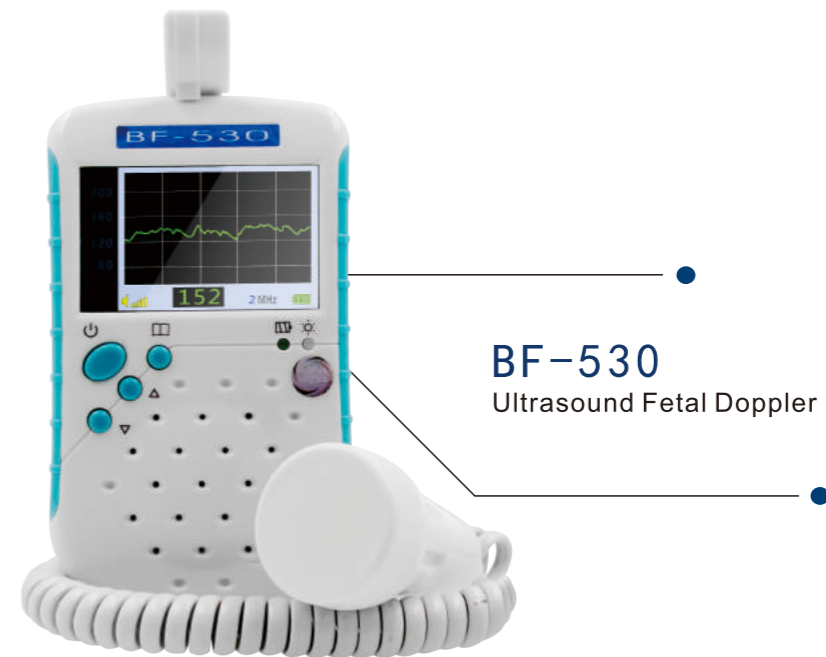
BF series ultrasound fetal doppler mainly applies to detect fetal heart rate in hospital, clinic and at home etc. Can also be used for detector arterial blood flow.

Features

5.0\8.0MHz 2.0\3.0MHz



- White backlight LCD show the probe working frequency, battery capacity, Doppler signal and alarm indicator; user friendly interface makes easy operation;
- White backlight LCD can display FHR for darkness use, user can set the white backlight to save energy, extend battery life, with automatic shutdown function;
- Clear sound with a high-quality built-in loudspeaker, output jack can be connected to instruments (headset) ;
- 2.0 MHz probe can be changed into 3.0 MHz, 5.0 MHz, 8.0 MHz probes easily;
- 5.0 MHz probe to detect umbilical blood flow (for option);
- 8.0 MHz probe to detect vascular blood flow (for option);
- 1.5 V batteries be chosen by dry or rechargeable batteries;
- Working mode: continuous ultrasound Doppler.



BF-530
Ultrasound Fetal Doppler

Application

BF series ultrasound fetal doppler mainly applies to detect fetal heart rate in hospital, clinic and at home etc.

Features

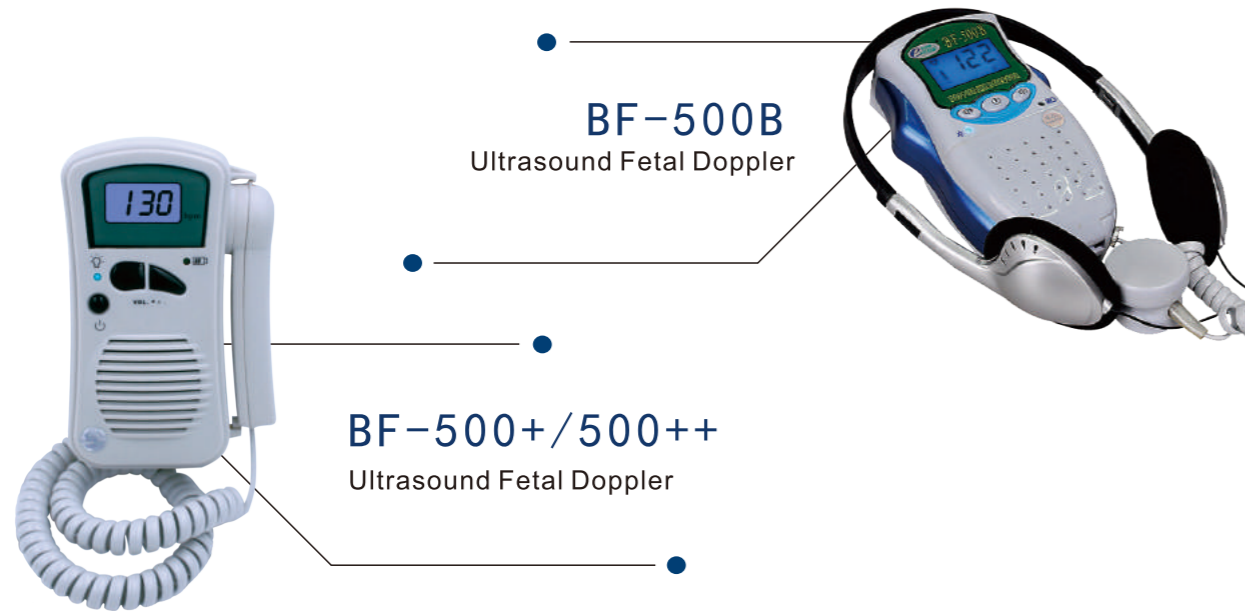


Digital display interface



Curve display interface

- Portable, 2.4" TFT LCD displays FHR data, heart rate curve (dual-interface), monitoring time, probe frequency, volume and battery capacity;
- Abnormal audible and visual alarm, with FHR data turning from green to red;
- Automatic power off (one minute) to save the battery power;
- Built-in Li-ion rechargeable battery;
- Standard collocation for USB port, analysis software(for option)
- Working mode: Pulsed ultrasound Doppler;
- Standard 2.0M probe.

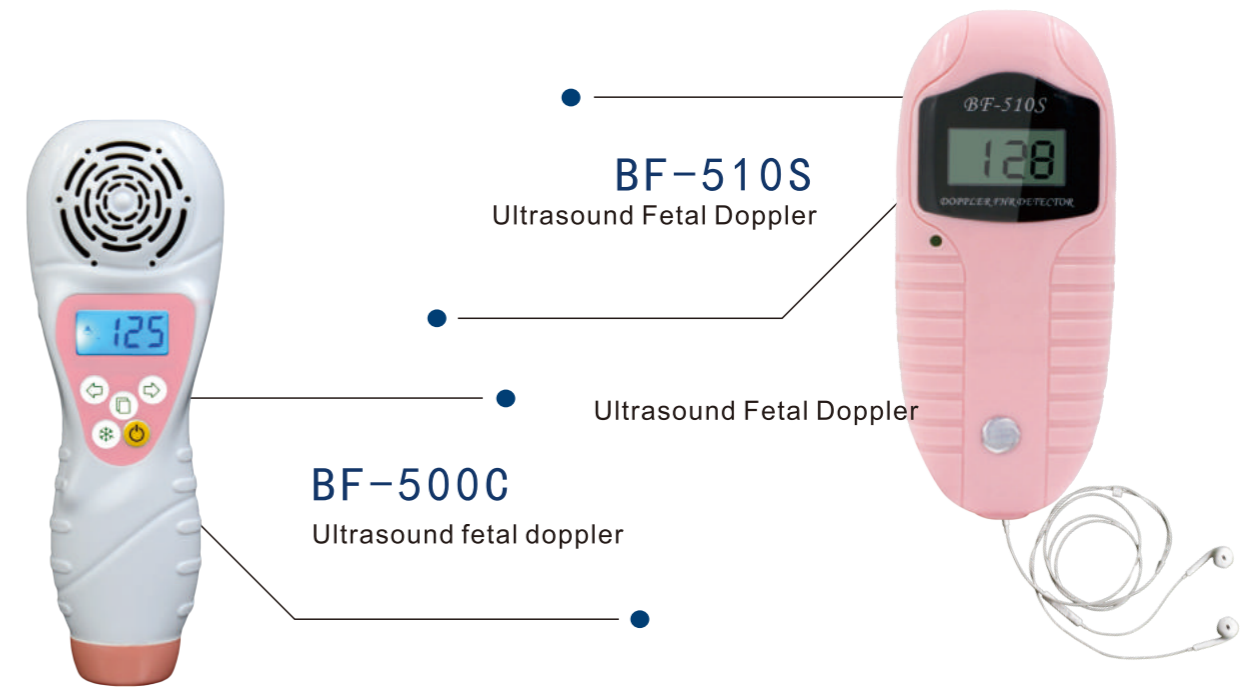


Application

BF series ultrasound fetal doppler mainly applies to detect fetal heart rate in hospital, clinic and at home etc.

Features

- LCD can display FHR accurately;
- High quality loudspeaker with clear sound and the audio output interface;
- Ni-MH rechargeable battery, collocated with gallus and portable bag, easy to carry;
- Automatic power off (one minute) and alarm function for abnormal heart rate;
- Pocket BF-500++: Blue backlight LCD displays FHR accurately convenient to use at night;
- BF-500+/500++ with standard 2.5 MHz probe;
- Pocket BF-500B: LCD can display FHR, synchronous FHR signal battery capacity indicator;
- Volume and abnormal alarm signal etc, with standard 2.0 MHz probe.



Application

BF series ultrasound fetal doppler mainly applies to detect fetal heart rate in hospital, clinic and at home etc.

Features

- Alarm function for abnormal FHR and lower battery capacity;
- Pocket BF-510S (pink, blue, purple) is the FHR detector for home use. LCD displays the fetal heart rate accurately ;
- Design feature complies with ergonomics and integrate main unit with the probe;
- Clear sound with a high-quality built-in loudspeaker, sound amplified with external electric box and record;
- Equipped with headphones Interface, can connect the audio device;
- Can freeze the data for easier reading;
- 9V dry battery, special rechargeable battery and charger are optional;
- water-proof design, works under the water, and specially designed for water delivery;
- With standard 2.0 MHz probe.



BF-600+
Ultrasound Fetal Doppler

Application

BF series ultrasound fetal doppler mainly applies to detect fetal heart rate in hospital, clinic and at home etc.

Features

- BF 600+ : LED displays the FHR;
- Probe with efficient anti-jamming design, stable performance;
- Apply auto-correlation to detect FHR accurately, showing the value with accurate and reliable;
- Acoustic-optic alarm for abnormal FHR;
- Automatic power off (1 minute) ;
- High-quality loudspeaker with clear sound and the audio output interface;
- Built-in high-capacity rechargeable battery, can last over 8 hours;
- Various frequency probes are available for different use;
- Apply auto-correlation to detect FHR accurately;
- Normative collocation: 2.0MHz probe, 3.0Mhz for option) .

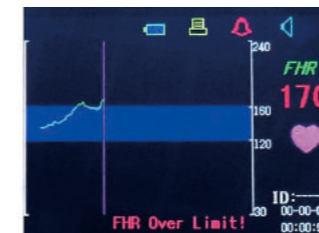


BF-610/610P
Ultrasound Fetal Doppler

Application

BF series ultrasound fetal doppler mainly applies to detect fetal heart rate in hospital, clinic and at home etc.

Features



Super Range alarm interface

- 2.4" LCD blue backlight screen displays the FHR data or graphic (dual-interface), battery capacity, volume, and synchronous FHR signal etc;
- High quality loudspeaker with clear sound with the audio output's interface;
- It can switch interfaces, set function, alarm range and language easily;
- Acoustic optic alarm function for abnormal FHR and low power;
- BF-610P built-in thermal printer can synchronously print the FHR curve clearly and delicately;
- Replay FHR data and graphic within 12 hours (for option). Automatic power off (1 minute);
- High sensitive ultrasonic Doppler, applying auto-correlation to detect FHR accurately;
- RS 232 port can transmit the data to computer. The PC software is for option;
- Various frequency probes are available for different use (for option):
- AC/DC power, battery>4 hours;
- Standard collocation: 2.0MHz ultrasound probe .



BF-610M
Ultrasound Fetal Doppler

Application

BF series ultrasound fetal doppler mainly applies to detect fetal heart rate in hospital, clinic and at home etc.

Features



display interface

- 3.5" TFT LCD can display FHR and curve, fetal movement UC, PR, SpO2(dual-interface), battery indicator, volume and synchronous FHR signal;
- Switch interfaces and set function, alarm range and language easily;
- High quality loudspeaker with clear sound with the audio output interface;
- Acoustic—optic alarm function for abnormal FHR and low battery;
- Built-in thermal printer can print the heart rate curve synchronously, clear and delicate;
- Replay the FHR and heart curve within 12 hours (for option)
- Automatic Power off (one minute) ;
- RS 232 port can transmit the data to computer. The PC software is for option;
- Work under AC/DC power, built in battery >4 hours;
- Normative collocation: 1. 0MHz ultrasound probe, UC probe, remote event marker and SpO2 probe.



BFM-700E/700E+
Series Fetal/Maternal Monitor

Application

BFM series ultrasound fetal Monitor mainly applies to detect fetal heart rate in hospital, clinic etc.

Features



- BFM-700E+ made for twins, BFM-700E made for single;
- Display the US and TOCO Data, and monitoring curve with three groups LED display;
- Fetal heart rate probe with nine chips, wide beam, high efficiency anti-jamming design, stable performance;
- Automatic to hibernate mode when without signal input;
- Memorize and replay the data in 24 hours (for option) ;
- Use hot linear array recorder, real-time printing or print after saving, speed adjustable, sampling data can be set according to the requirements of the user;
- Use RS 232 or USB port to transmit the data to computer;
- Trolley for option: model BT-101M;
- Normative collocation: 1. 0MHz ultrasound probe, UC probe remote fetal motion marker.



BFM-700/700+
Fetal/Maternal Monitor

Application

BFM series ultrasound fetal Monitor mainly applies to detect fetal heart rate in hospital, clinic etc.

Features



- BFM-700 apply for single fetus monitoring, BFM-700+ apply for twins;
- 5.6" LCD display can display the US and TOCO Data and monitoring curve;
- Fetal heart rate probe with nine chips, wide beam, high efficiency anti-jamming design, stable performance;
- FHR collection signal for quality indication, alarm indication for abnormal FHR, Fetal movement indication with freeze function;
- Coding keyboard adjusts all parameter setting of unit, easy to use;
- Automatic to hibernate mode when without signal input ;
- Memorize and replay the data in 24 hours(for option);
- Use hot linear array recorder, real-time printing or print after saving, the printing speed can be setup to 1,2,3cm/min, sampling data can be set according to the requirements of the user;
- Use RS 232 or USB port to transmit the data to computer;
- Trolley for option: model BT-101M;
- Normative collocation: 1.0MHz ultrasound probe, UC probe remote fetal motion marker.



BFM-700M
Fetal/Maternal Monitor

Application

BFM series ultrasound fetal Monitor mainly applies to detect fetal heart rate in hospital, clinic etc.

Features



display interface

- 5.6 inches TFT LCD displays 2 x US, 1x UC data mother's NIBP, TEMP, RR, SpO2, and ECG main parameters and monitoring trace curve etc.;
- Use hot linear array recorder, real-time monitoring data or print records;
- Apply digital signal processor technology to achieve realtime fetal heart rate, auto-correlation operation to ensure that the detection of fetal heart rate is accurate and reliable;
- 1.0 MHz pulse Doppler mode of operation, low ultrasonic dose, low noise, high sensitivity
- Ultrasound dose probe;
- Two remote event marker - Pregnant women and medical staff can record at the same time;
- Including a variety of alarm functions: fetal heart rate over limit, probe off during monitoring, low battery, print box not closed or the printer out of paper, etc.;
- The monitoring data can be conveyed to exterior computer through RS-232 or USB port;
- Standard configuration: 1.0MHz ultrasound probe, contractions pressure probe, ECG probe, body temperature probe remote fetal motion marker, etc.,



中央监护站



BFM-750
Central Monitoring System

Application

Can network all fetal monitors in delivery room, labor room and clinic. Monitor numerous pregnant women in the whole obstetric department, realize information centralized management and resource sharing, reduce the doctor's labor intensity and improve their management level.

Features

- Department management computerized, all data can be saved for a long time, can query the history record, playback data, comparative analysis and other functions at any time, at the same time, it can be connected with a 4/9/16 beds obstetric monitor, can simultaneously monitor fetal heart rate, uterine contractions pressure, fetal movement, etc;
- Obstetrical wireless network: mobile monitoring--make each bedside machine can be flexible placement and movement, real-time monitoring of pregnant women from the ward to the waiting delivery room to the delivery room of the whole process. mobile fetal monitor at any time to facilitate the recording of fetal and maternal information;
- Single column, double column, focusing on and multiple display modes, multiple monitoring at the same time observation;
- Multiple accessing modes: Wired LAN connection, Wireless LAN connection, RS-232 serial port connection, USB port;
- Bluetooth connection (optional);
- Flexible methods to network: Wired, wireless and wired/wireless mixed communications;
- Can use ordinary printer to print curves and reports, saving costs;
- Large-capacity permanent memory, mass data storage.



BVF-266
Vein Finder

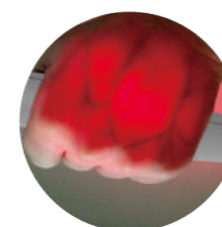
BVF-260
Vein Finder



Application

Assist paramedics in the venous puncture, rapid and accurate venous search and positioning, especially for children, obesity, edema, hirsutism and other vascular positioning difficulties of patients with a significant role, it can help improve the success rate of venous puncture, reduce the patient's pain and improve the doctor-patient relationship.

Features



BVF-260



BVF-266

- Induction type light source switch, safety and power saving;
- The exterior design is more reasonable, image is clearer, grip more comfortable;
- Ergonomic design, in line with operating habits, grip more stable, puncture more convenient;
- Hand-held BVF-260 compact and lightweight, can be mastered by one hand, use without bracket, free from environmental restrictions;
- The intensity of the light source can be adjusted, suitable for infants and so on;
- Desktop BVF-266 smaller, light weight, easy to carry and store;
- The light source brightness adjustment range is wide, suitable for a wide range of people;
- With power plug and heat sink system, support using for a long time;
- Medical cold light irradiation, safety does not hurt the eye.



BVF-263
Vein Finder

Application

Assist paramedics in the venous puncture, rapid and accurate venous search and positioning, especially for children, obesity, edema, hirsutism and other vascular positioning difficulties of patients with a significant role, it can help improve the success rate of venous puncture, reduce the patient's pain and improve the doctor-patient relationship.

Features



- Compact and lightweight, can be mastered by one hand, easy to carry;
- Use without bracket, free from environmental restrictions;
- With blue and white, red and green two imaging modes, one-button free to switch;
- Image performance optimization, brightness adjustable;
- Use medical cold light irradiation, safety does not hurt the eye;
- Touch mode dormancy, safe and save electricity;
- The exterior design is more reasonable, image is clearer, grip more comfortable;
- The light source brightness adjustment range is wide, suitable for a wide range of people.



BD-330
Syringe Destroyer

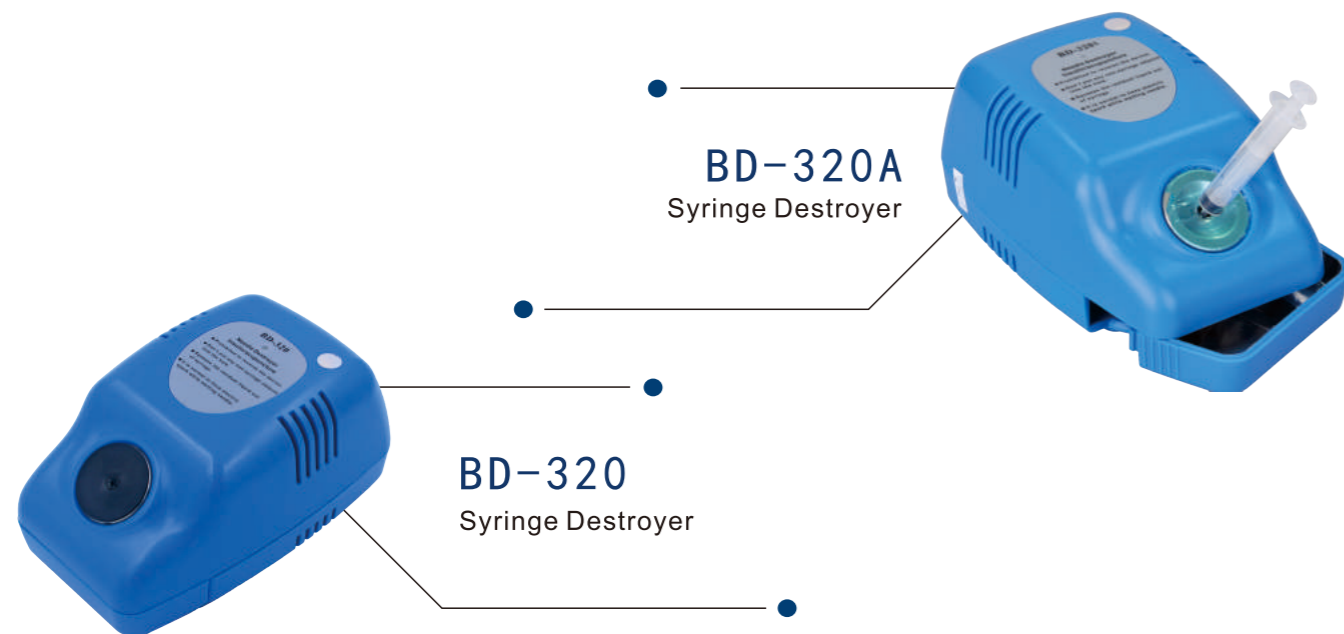
Application

By melting the needle at a low pressure moment, can be used to prevent the repeated use of syringe destroy the disposable syringe and prevent cross infection. Suitable for dental oral syringe special needles or other similar needles. (Insulin injection needles, acupuncture needles and disposable skin test needles).

Features



- It has the function of damaging needle (30g-34g), automatic disassembly of the needle, ozone disinfection (optional) and pre-heating of liquid medicine (optional);
- Safe: High quality durable electrode, low voltage melt needles instantly, double overheat protection;
- Fast: three steps to complete destruction of both ends of the anesthetic needle, the needle can be removed by rotating automatically;
- Health: instantaneous vaporization residual liquid in the ne-edle, ozone disinfection, special waste collection bin (in accordance with Regulations on the management of medical waste requirements);
- Conveniently: disposable waste collection bin, Easy disassembly, uniform treatment to prevent secondary pollution;
- Humanity: Professional anesthetic pre-heating device, greatly alleviate the suffering of patients;
- Consumables: waste residue collecting barrels.



Application

By melting the needle at a low pressure moment, can be used to prevent the repeated use of syringe, destroy the disposable syringe and prevent cross infection.

Features

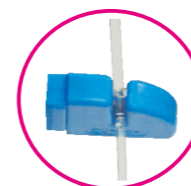
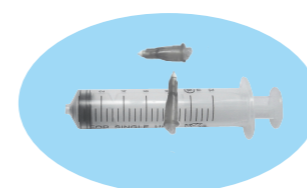
- Can melt the acupuncture thin needle, the speed is fast and the spark is small;
- In the process of melting needle, it has double over-heating protection function;
- The machine is light weight, easy to operate, easy maintenance
- Work status instructions clear;
- The remaining liquid in the syringe can be boiled immediately without any contamination;
- During the melting process, the indicator light is sparking, indicating that the pointer is being destroyed, and the whole process is completed within 1 to 3 seconds;



Application

By melting the needle at a low pressure moment, can be used to prevent the repeated use of syringe, destroy the disposable syringe and prevent cross infection.

Features



Infusion tube cutter

- Low pressure instantly melt syringe needles
- High-quality silver alloy electrode, no oxidation;
- Double overheat protective measures are provided for the fuse, safe and secure;
- The machine is light weight, easy to operate, easy to replace the blade, easy maintenance;
- Work status instructions clear;
- The machine has fireproof cover;
- Residual liquid in the needle is instantly vaporized, debris has slag box loading;
- After injection, the needle is directly inserted into the hole to melt, and the syringe can be damaged by downward pressure;
- It has alarm prompts and ozone disinfection function when waste residue box is full
- Can cut off the syringe needle and needle joints, cut off the infusion tube
- Melt the needle, damage the needle tube, built-in rechargeable battery.



BIC-30
Insulin Refrigerator

Application

The Insulin refrigerator is developed specifically for the low temperature storage requirements of insulin or some drugs. The device makes the insulin and other drugs storage environment temperature control at 2-8 °C through the refrigeration unit and sealed environment. Using built-in high capacity lithium battery and external mobile can achieve long standby power supply.

Features



- Simple operation and precise temperature control;
- Large HD color LCD display, intelligent display and control system;
- Under the environment temperature is 25 °C to keep temperature inside the box 2-8 °C;
- Light and delicate, super long standby;
- Appearance beautiful and generous, palm size is easy to carry the built-in battery and external battery can guarantee the continuous working time of the refrigerator box for about 10 hours.
- LED lighting and magnifying glass function
- Unique LED highlighting function, convenient night lighting, magnifying glass greatly facilitate the elderly to see the text on drugs;
- Using semiconductor refrigeration technology, fluorine-free environmental protection, stable work, long service life, low temperature anti-freezing function;
- Dimensions: 198mm*82mm*80mm
- Space capacity: 0.15L;
- Weight: 0.8Kg.



BFP-10
Feeding Pumps

Application

Suitable for patients who needs enteral feeding, hospitalized and non-hospitalized patients both can use this product for enteral feeding. This product is used to provide additional power while feeding intestinal nutrient solution to human, can control the feed, ensure the orientation of intestinal nutrient solution in the infusion tube and feeding tube at a fixed speed flows into the body of the stomach or intestines, it is beneficial to the absorption and utilization of intestinal nutrient solution for patient.

Features



- Microcomputer control, accurate and reliable, Automatic alarm, safe and reliable;
- Human-computer interaction interface friendly, panel light touch key, step by step tips, easy to guide procedures and operations;
- Tubing can quickly connect with bottled or bagged sets;
- A variety of sensor technology that can detect the state of the upstream and downstream flows;
- Automatic perfusion function;
- AC and DC power supply;
- Unique design of the bottom suction cup make the machine firmly adsorbed on the table, prevent touch cause subversion during operation and placement;
- Preheating function of nutrient solution (optional);
- Flow rate setting range: 1-400ml / hr increment: 1ml / hr;
- Flow Rate Accuracy: 10% of the selected flow rate or 0.5 ml / hr, whichever is greater; Infusion total volume range: 1-3000ml 1-1000ml each time 1-99 times 1-20 hours intervals; rinse 10-50ml interval 1-25h.

BSNF-100
Obstetric Detector



BSNT-100
Vital Signs Monitor



Application

Obstetric detector can measure fetal heart rate, blood oxygen, blood pressure, convenience easy to operate, print results in real time.

Features



Obstetric Detector

- Fetal heart rate, blood oxygen and blood pressure were measured completely at one-time;
- Clearly shows fetal heart rate, blood pressure oxygen and other parameters;
- Real-time printing of test data;
- Easy operation, convenient and intuitive working status;
- High quality loudspeaker with clear and sonorous sound;
- The built-in rechargeable battery can work for 3 hours continuously;

Vital Signs Monitor

- Body temperature, oxygen, blood pressure;
- Equipped with printer, real-time printing parameters;
- Highlighted clear color LCD display body temperature, blood pressure, oxygen and other parameters
- Modular design, which facilitates system hardware and software upgrade and expansion, can be connected to the computer;
- Man-machine dialogue interface, easy to operate, convenient, intuitive work status;
- The built-in rechargeable battery can work for 3 hours continuously.

BVF-262

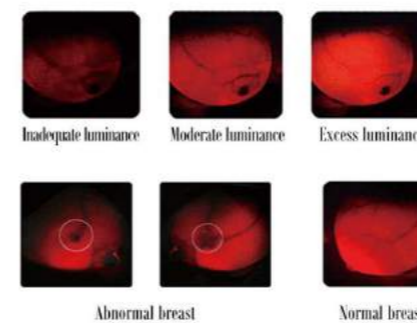
Breast Self Check Mammography Apparatus



Application

The breast Awareness Apparatus BVF-262 take the Specific wavelength near infrared as the source to penetrate the breast. Different tissues of body absorb infrared light differently. For example, abnormal tissue absorbs infrared light preferentially while tissue in good condition absorbing less infrared light. The health condition of the breast can be examined by the images.

Features



- Breast tissues are clearly imaged under the fluoroscopy of red light;
- Compact and lightweight, ergonomic design;
- Dual inductive touch switch prevents glare;
- LED array, strong light source;
- Infinite touch brightness adjustment;
- Built-in rechargeable battery for easy use;
- Dimension(L*W*H): 201mm*38mm*50mm;
- Luminous power : 18W;
- Near-infrared wavelength : 625~630nm±5%;
- Power adapter input/output voltage : Input 100V-240V . Output DC 12 V.



Application

The Ultrasonic Cosmetic Instrument adopts high - tech nano - chip mode and special process shock technology, which make the purified water nano-sizes and split it into 0.3 to 0.5 microns so that it can quickly penetrate into the bottom layer of the skin for better water absorption. High-frequency ultrasonic waves can break up the pigment aggregates in the epidermis and stimulate proteins in the skin to activate physiological activities that have stopped to make skin more and more smooth and exquisite.

Features



- Nano water replenishing technology speeds up the absorption with 500 small holes with a diameter of 6um and vibration at a million frequencies per second;
- Lift and firm skin to get rid of sagging flesh and excess body fat with the mechanical vibrations at 10,000 Hz per second;
- Medical-grade and anti-allergy ultrasonic probe won't strain skin with permanent anti-bacterial and anti-oxidation;
- With mobile power supply and built-in lithium battery power supply, current stability and safety is guaranteed;
- Five depths for one probe meet multiple requirements with cosmetic mode of 5 levels;
- Ultrasound deep into the skin with the depth of 4 to 6mm, reaching the cell, so youth is visible;
- Microvibration gently massages skin to improve microcirculation of muscle base, accelerating penetration and speed up skin absorption;
- Compact and portable, one - piece design make it easy to use;
- Removing dirt accelerates skin metabolism with warmth.

Company Style

